

Meet the Herd

Main March

Lichfield

- 1. Henry the Elephant**
Artist: Donna Newman
Sponsor: Richard Winterton Auctioneers
Location: Three Spires Shopping Centre

2. Time for Tea
Artist: Jill Busby
Sponsor: Nineteen
Location: Three Spires Shopping Centre

3. Flora
Artist: Becky Smith
Sponsor: Headlam Group
Location: Speakers Corner, Dam Street, Lichfield

4. Nellie
Artist: Sophie Li-Rocchi
Sponsor: Lichfield Rugby Club
Location: Wade Street, Lichfield

5. Eternal Life
Artist: MrASingh
Sponsor: Lichfield Cathedral
Location: Inside Lichfield Cathedral

6. Staffie
Artist: Anne-Marie Byrne
Sponsor: Lichfield Cathedral
Location: near the St Chad's statue

7. Vince
Artist: Jenny Marshall
Sponsor: Davisons Law
Location: Davisons Law office, Bore Street

8. Tony
Artist: St Giles Hospice
Sponsor: **Sponsor me!**
Location: Dam Street, Lichfield

9. Fruity Frida
Artist: Lucy Hebden
Sponsor: Manor Farm Fruits
Location: Beacon Park

10. Mighty Oak
Artist: Donna Newman
Sponsor: Shire Leasing
Location: Beacon Park

11. Zoonomia
Artist: Jenny Guthrie
Sponsor: Tipsters
Location: Shaw Lane, Beacon Park

12. Elovephant
Artist: Reilly Creative
Sponsor: Lichfield District Council
Location: Frog Lane, Lichfield

13. Trunkful of Memories
Artist: Gayani Ariyaratne
Sponsor: Central Co-op
Location: Boley Park



Tamworth

- 14. Ski-Ellie**
Artist: Sally Adams
Sponsor: Snowdome
Location: Snowdome (Interior)

15. Rainbow Elephant
Artist: Emma Turner
Sponsor: Estate Signs and Print Ltd
Location: Snowdome

16. Jumbo Parcel (Handle with Care)
Artist: David Graham
Sponsor: **Sponsor me!**
Location: Tamworth Castle Grounds

17. Elvis
Artist: Michelle Turton
Partner: BBC Radio WM
Location: Tamworth Castle Grounds

18. Tamworth Pigs
Artist: Sian Ellis
Sponsor: **Sponsor me!**
Location: Tamworth Castle Grounds

19. Brothwell
Artist: Jess Perrin
Sponsor: St Giles Hospice Shops
Location: St Edith's Church

March Merch!



Sutton Coldfield

- 20. Greenbelt**
Artist: Sue Guthrie
Sponsor: Lichfield Maize Maze
Location: Visitors Centre, Sutton Park

21. Paris
Artist: (my) sound trauma
Sponsor: GBCR
Location: Wyndley Gate, Sutton Park

22. Connie the Calf
Artist: Reilly Creative
Sponsor: RotoSpa
Location: Boldmere Gate, Sutton Park

23. Bubble
Artist: Jenny Leonard
Sponsor: Wes Webster Photography
Location: Holy Trinity Parish Church

24. An Elephant Never Forgets
Artist: Sian Ellis
Sponsor: Studio Forty Six
Location: Town Gate, Sutton Coldfield

25. Cheesey Does It
Artist: (my) sound trauma
Sponsor: The Deli Social Limited
Location: Boldmere Road, Sutton Coldfield

26. Olivia
Artist: Gill Prendergast
Sponsor: FIT Midlands Limited
Location: Boldmere Road, Sutton Coldfield

27. Where's Ellie
Artist: Donna Newman
Sponsor: Neighbourhood Forum
Location: Boldmere Road, Sutton Coldfield

28. Bill the Builder
Artist: Hannah Jayne Lewin
Sponsor: Wincanton
Location: Clifton Road, Sutton Coldfield

29. Geo
Artist: MrASingh
Sponsor: Dee Mistry Creative
Location: Mere Green, Sutton Coldfield

30. Funky Trunk
Artist: Hannah Jayne Lewin
Sponsor: Gracechurch Shopping Centre, Sutton Coldfield



Mini March

Lichfield

- 31. Daisy**
Artist: Becky Smith
Location: Lichfield Cathedral

31. Pip
Artist: Marni Maurri
Location: Lichfield Cathedral

31. Petit's Pachyderm
Created by: Lichfield Cathedral School
Location: Lichfield Cathedral

31. Nelson
Artist: Olivia Silk
Location: Lichfield Cathedral

32. Baby David
Created by: Lichfield Garrick
Location: Lichfield Garrick

33. Woody
Created by: Charnwood Primary School
Location: St Giles Book Shop, Market Street

34. Poppy-Belle
Created by: Fulfen Primary School
Location: The Hub at St Mary's

34. Chase
Created by: Chase Terrace Primary
Location: The Hub at St Mary's

34. Humpty
Created by: Humpty Dumpty Day Nurseries
Location: The Hub at St Mary's

34. Charlie
Created by: Christ Church C. E. Primary
Location: The Hub at St Mary's

34. Tiny Tusk's Tales
Created by: Five Spices Academy
Location: The Hub at St Mary's

34. Saxon
Created by: Saxon Hill Academy
Location: The Hub at St Mary's

35. Grace
Created by: St Joseph & St Theresa Catholic Primary School
Location: St Giles Shop, Wade Street

35. Elwood
Created by: Burntwood Rugby Club
Location: St Giles Shop, Wade Street

36. Blossom
Created by: Warton Nethersole's C. E. Primary School
Location: St Giles Shop, Tamworth St

37. Streethay
Created by: Streethay Primary School
Location: Co-op, Boley Park

37. Ellie
Created by: Shabir Shah Foundation
Location: Co-op, Boley Park



Sutton Coldfield

- 40. Bold Billy**
Created by: Age Concern
Location: Communitea Café

40. Ellie
Created by: Little Ripley Day Nurseries
Location: Communitea Café

40. Velma
Created by: Sladefield Infant School
Location: Communitea Café

41. Maney Milly
Created by: Maney Hill Primary School
Location: RotoSpa

41. Hope Trunkingham
Created by: Deanery C. E. Primary School
Location: RotoSpa

41. Sutton Rose
Created by: Sutton Rose Care Home
Location: RotoSpa

41. Emma
Created by: Cherished
Location: RotoSpa

42. Hope
Created by: Real Life Church
Location: St Giles Shop, Boldmere

42. Shaba
Created by: Adopt Birmingham
Location: St Giles Shop, Boldmere

43. CuckooPhantal
Created by: Nechells E-Act Academy
Location: Visitors Centre, Sutton Park

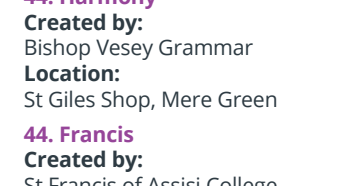
43. Cuddles
Created by: Mencap
Location: Visitors Centre, Sutton Park

43. Stripey Trunks
Created by: Lynne Hollingsworth
Location: Visitors Centre, Sutton Park

44. Harmony
Created by: Bishop Vesey Grammar
Location: St Giles Shop, Mere Green

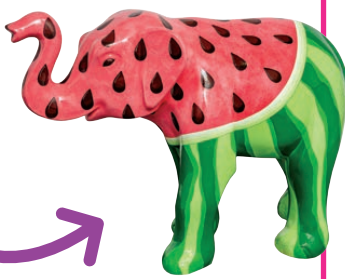
44. Francis
Created by: St Francis of Assisi College
Location: St Giles Shop, Mere Green

44. Atlas
Artist: Boglarka Toth
Location: St Giles Shop, Mere Green



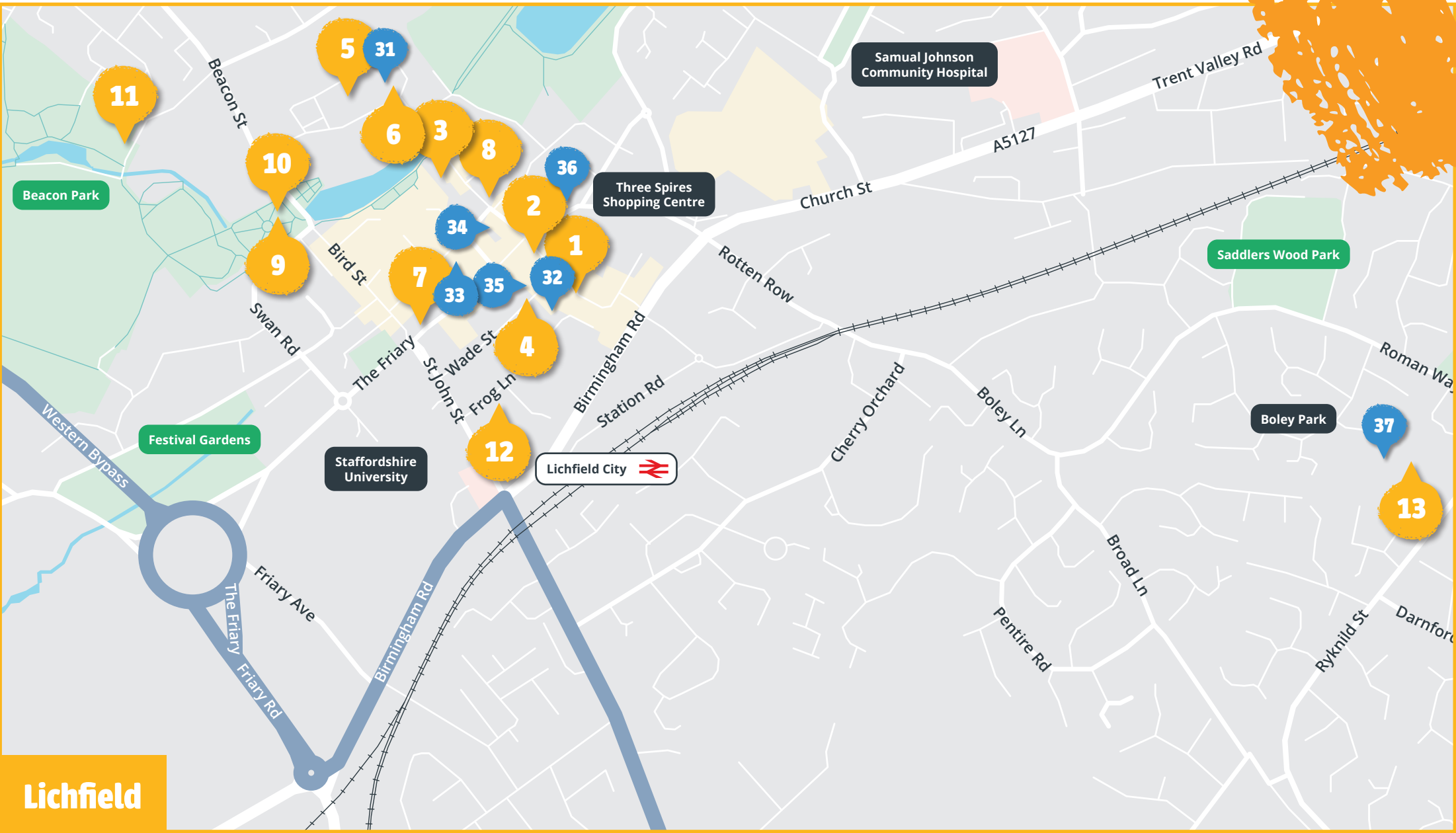
Win! Your chance to take us home

More about the raffle prize draw overleaf

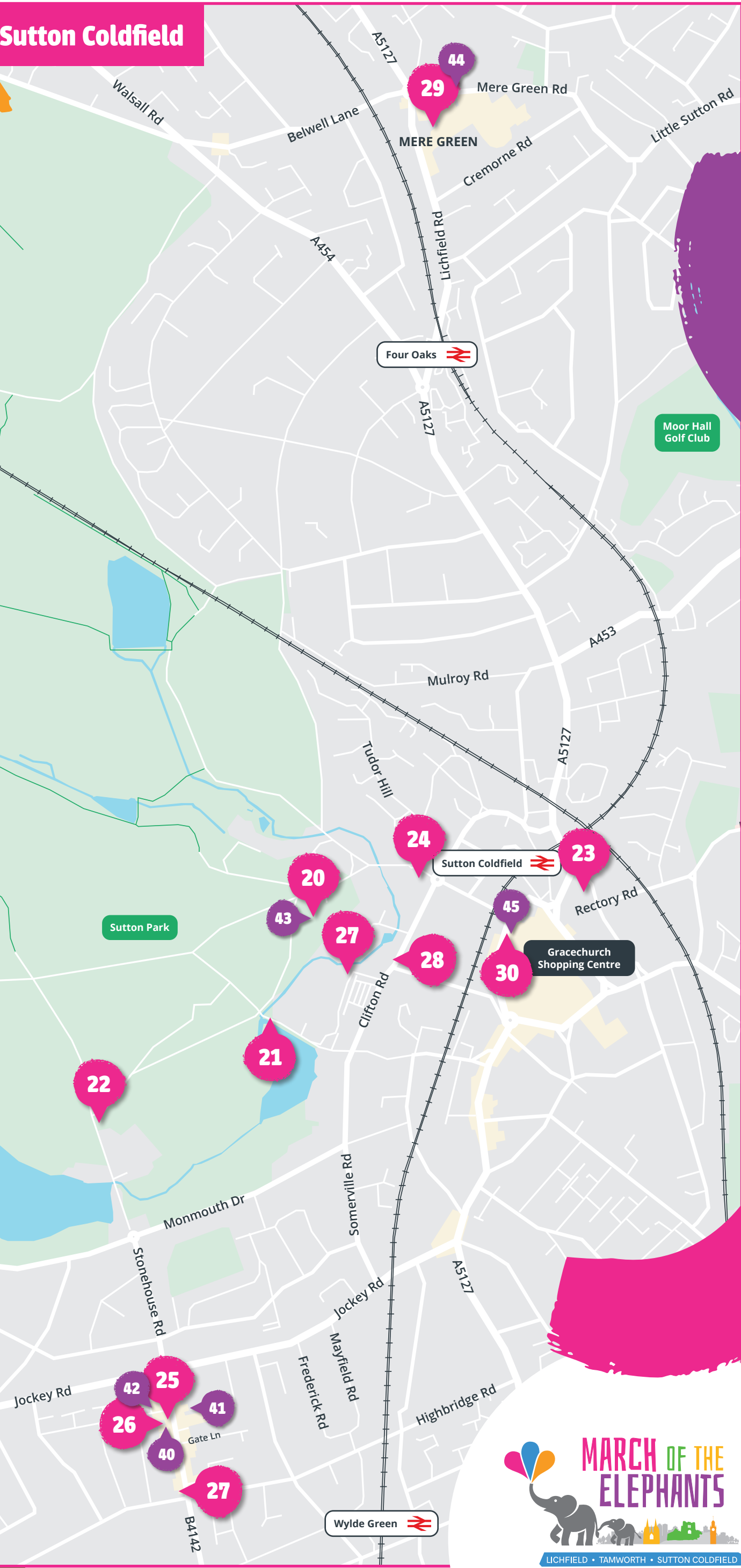


- 45. Pretty Cool Nigella**
Created by: Alliance of Sutton Practices
Location: Gracechurch Shopping Centre

- 45. AINA**
Created by: Yearn 2 Be
Location: Gracechurch Shopping Centre



Sutton Coldfield





Trail Map



1st July - 8th September 2024

www.marchoftheelephants.co.uk



A Wild in Art event brought to you by St Giles Hospice WILD IN ART

A message from Wild in Art

“Congratulations to the March of the Elephants team and all at St Giles Hospice for creating a truly outstanding event.”

“Wild in Art passionately champions the importance of art and being creative for everyone and it's wonderful to see the elephants showcasing such a wealth of artistic talent. Exploring the trail is a fun, outdoor activity to do with friends and family.

“I hope everyone will enjoy discovering the elephants!”



Charlie Langhorne,
Managing Director and Co-founder, Wild in Art

A message from SnowDome

Presenting Partner

“We’re really excited and proud to be the Presenting Partner for March of the Elephants. As a company, it’s always been really important to us to offer inclusive, family activities to our community, and we’ve chosen to work closely with St Giles on this project so we can continue to do that throughout the Summer of 2024.”

Tim Carter
Director, SnowDome



Win your very own mini elephant

Enter our trunk-tastic raffle!

You could be the proud owner of one of two beautiful mini elephant sculptures, each lovingly designed and hand-painted by a talented artist.

To enter the raffle, buy your tickets at www.stgileshospice.com/elephantraffle for just £5 each!

All funds raised will help St Giles Hospice continue to care for local people, and their loved ones, living with terminal illness.

Closing date:
25th September

Draw date:
3rd October



St Giles Hospice (Promotions) Limited T/A St Giles Hospice Lottery is licensed and regulated in Great Britain by the Gambling Commission under account number 4914. Responsible Persons: Elinor Eustace and Emma Yates. Our full Terms and Conditions are available on our website. St Giles Hospice Lottery is a wholly owned subsidiary of St Giles Hospice and all profits go to St Giles Hospice (Registered Charity No. 509014).

Players must be resident in Great Britain and over 18 years of age. Please gamble responsibly. For practical help and support on problem gambling, contact GAMCARE on 0808 802 0133 or visit www.begambleaware.org if needed.

Getting about

Our ele-fantastic trail is split across three locations; Lichfield, Tamworth and Sutton Coldfield. Each location is connected by good public transport links, so it's up to you whether you visit the whole trail in one day, or make the fun last by taking on three mini trails over a few days.



Train

Each location has a train station, so you can easily get around the three trail areas by train and there are multiple buses following the trail routes.



Bus

Sutton to Lichfield: National Express West Midlands X3 (via Mere Green – hop off to visit Geo!)

Lichfield to Tamworth: Arriva 765/X65 (via Boley Park – hop off to visit Trunkful of Memories).

Tamworth to Sutton:
Arriva 110 or Diamond WM76



Walk

Tamworth: Should take around 30-45 minutes

Sutton Coldfield: Should take around 120 minutes (including public transport to/from Mere Green)

Lichfield: Should take around 90 minutes (including public transport to/from Boley Park)

Remember someone special by adding their name to our Memory Elephant this summer

They say an elephant never forgets and at St Giles Hospice we know the importance of making lasting memories.

As part of our March of the Elephants art sculpture trail, we've created our own hospice elephant to capture the memories of loved ones.

Our Memory Elephant will take up residence in our gardens at Whittington after the trail and be available to view all year round.

Add a loved one's name to our Memory Elephant

www.stgileshospice.com/memoryelephant



Pack your trunk with our March of the Elephants merch!

They say an elephant never forgets so take home some March of the Elephants memories from our range of ele-fantastic goodies, including:

- Paint your own elephant!
- Plush elephants
- Keyrings
- Tea towels
- Pens
- Notepads
- Magnets



Head over to the March of the Elephants website to purchase your trunk-tastic merch!
www.marchoftheelephants.co.uk/merchandise



Dates for your diary

Farewell Weekend

20th – 22nd September

Fri 12pm-6pm / Sat 10am-5pm / Sun 10am-4pm
Next to Bunkers Hill Car Park, Beacon Park, Lichfield

This will be your final chance to see all of our herd together, before the large elephants (and several small) are auctioned to raise funds for St Giles Hospice.

Take selfies, snapshots and take a last lingering look at all your favourites before they march away to their forever homes.

Find out more at
www.marchoftheelephants.co.uk/events

Auction

24th September

Lichfield Cathedral

Hosted by Richard Winterton Auctioneers

Place your bid for a chance to take your favourite elephant home with you.*

To pre-bid or register your interest to attend, visit
www.marchoftheelephants.co.uk/auction



*Serious bidders only please to help us raise as much as possible for St Giles Hospice.

Our Partners and Sponsors

A tonne of thanks to all our wonderful partners and sponsors who are generously supporting March of the Elephants.

Presenting Partner



Corporate and Community Sponsors



Official Suppliers



Creative Partner



Logistics Supplier



Supporting Partner



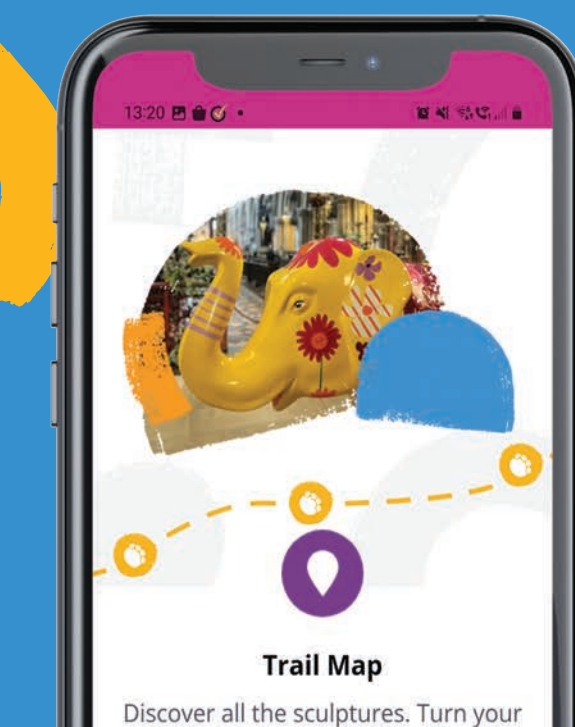
Download the app

Our March of the Elephants app can be downloaded from the App Store or Google Play for just £1.99*



This is an ele-fantastic way to track down all of our elephants, both large and small. Use the map to navigate around each location and enter the unique four digit codes to unlock the sculptures and a range of trunk-tastic rewards as you go!

*All proceeds from the app go to St Giles Hospice.



Mini March

Our Mini March includes small elephants each beautifully designed and painted by local schools and groups from across the region. Look out for them on the trail!



Report incidents

Look out for our herd!

Help us look after our elephants and keep them injury free.

When the trail has finished, all large elephants (and some mini ones) have an important job to do – raising vital funds for St Giles Hospice at our auction, so it's critical we keep them looking their best.

Herd Helpline: 01543 434027

If you find a damaged elephant, please make a note of the elephant's name, location and brief description of the damage and call our **Herd Helpline**. We can then alert our ele-ambulance team!



About St Giles Hospice



St Giles Hospice is a registered charity dedicated to providing outstanding care and support for local people, and their loved ones, living with a terminal illness.

For over 40 years, we've been an integral part of our community. Care is offered at our hospice sites in Whittington and Sutton Coldfield, as well as in patients' own homes across the region.



It costs close to
£10 million a year

to provide our specialist care services and, with up to 25% of this funded by the Government, we rely heavily on donations and income generation from our local community. With rising costs and a funding crisis looming over the hospice sector, we can only continue our vitally important care with the help of our kind-hearted supporters. If you can, please consider making a donation today. Your support will help us continue to be there for our patients, and their loved ones, living with a terminal illness. It takes a community to make a hospice. Thank you so much for your support.

A lot has changed since our hospice was founded in 1983, but one thing has remained constant – the need for good end of life care.

Make a donation

To make a donation visit
stgileshospice.com/donate

Your support matters, thank you.

